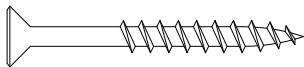


AlphaSorb® Wood Fiber Acoustic Panels

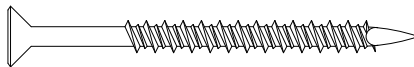
FASTENER TABLE

SCREW TYPE CHART			
PANEL THICKNESS	SUBSTRATE	RECOMMENDED SCREW TYPE	RECOMMENDED SCREW LENGTH
1"	HAT CHANNEL OR THIN METAL	SELF-TAPPING	2"
1"	WALL BOARD OR WOOD FURRING	DRYWALL SCREW	1-5/8"
1"	CONCRETE	TAPCON	2-1/4"

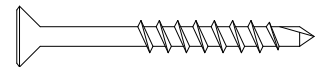
SCREW SPACING CHART		
APPLICATION	MINIMUM O.C. SPACING	MINIMUM SCREW DISTANCE FROM EDGE OF PANEL
CEILING	12"	3/4"
WALL	24"	3/4"
WALL: HIGH TRAFFIC	12"	3/4"



#6 SHARP POINT DRYWALL SCREW RECOMMENDED FOR WOOD APPLICATION



#6 CMU SCREW RECOMMENDED FOR MASONRY APPLICATION



#6 SELF TAPPING SCREW RECOMMENDED FOR METAL APPLICATIONS)

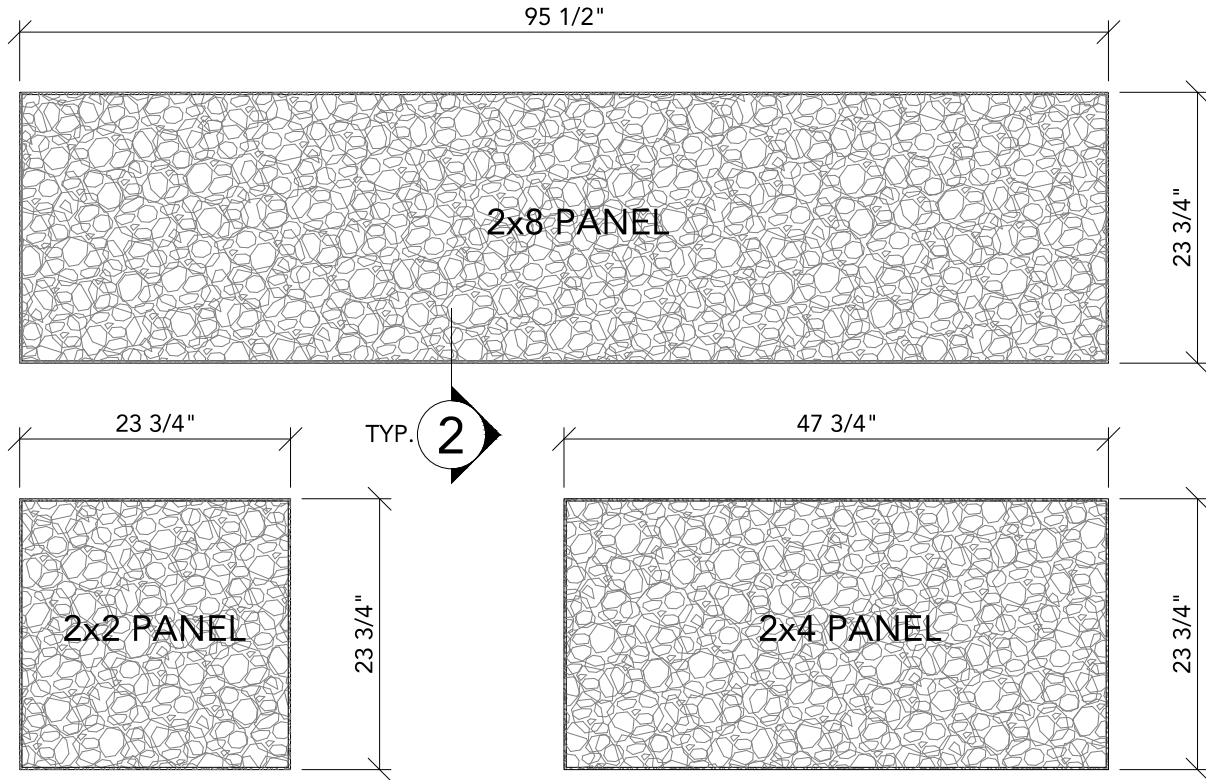
1 RECOMMENDED FASTENERS

1' = 1'-0"

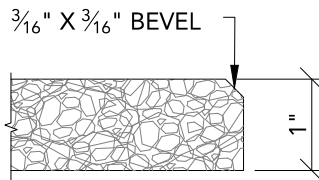
Revised: 2025-04-30

AlphaSorb® Wood Fiber Acoustic Panels

(WALL SYSTEM) - PANEL OPTIONS



1 TYPICAL PANEL OPTIONS
3/4" = 1'-0"

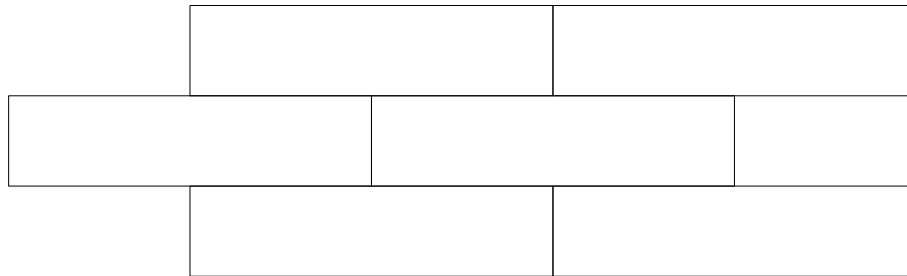


2 TYPICAL DIRECT ATTACH EDGE DETAIL
6" = 1'-0"

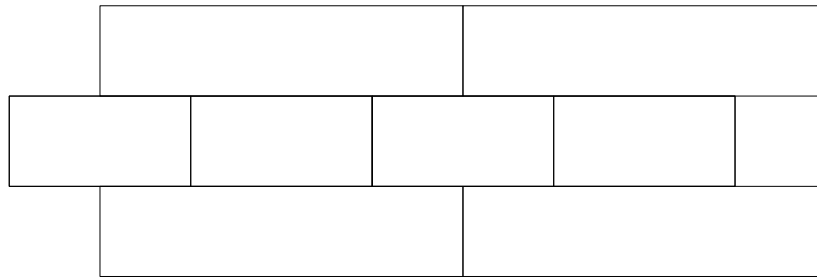
Revised: 2025-04-30

AlphaSorb® Wood Fiber Acoustic Panels

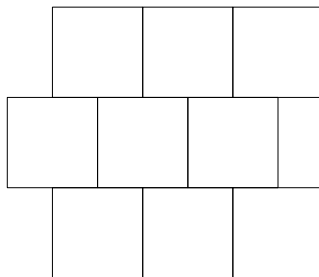
WALL SYSTEM - TYPICAL PANEL LAYOUTS



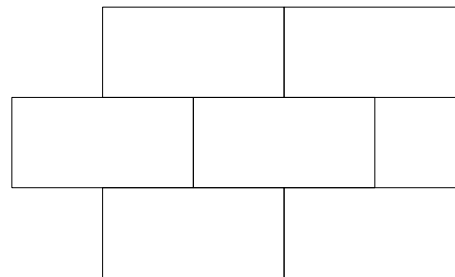
TYPICAL 2X8 PANEL LAYOUT



2X8 / 2X4 PANEL LAYOUT



TYPICAL 2X2 PANEL LAYOUT



TYPICAL 2X4 PANEL LAYOUT

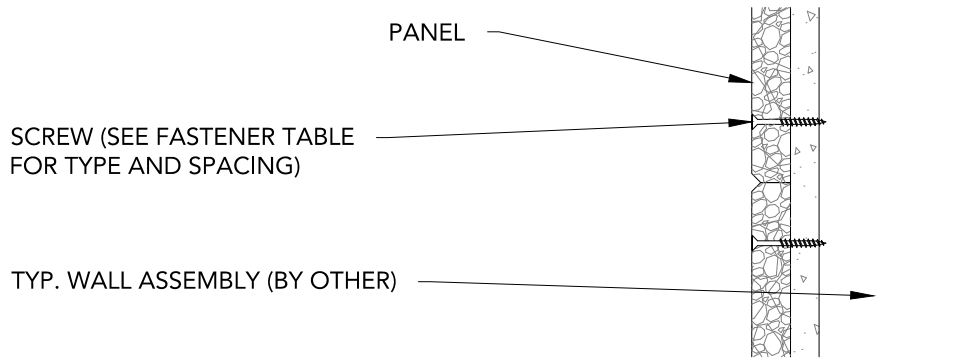
- ALL ENDS MUST BE STAGGERED (AS SHOWN)
- ALL ENDS MUST FALL ON FURRING
- 2X8 PANELS AND 2X4 PANELS CAN BE USED INTERCHANGEABLY (ONE 2X4 PANEL IS EXACTLY HALF THE LENGTH OF ONE 2X8 PANEL)

1 PANEL LAYOUT OPTIONS

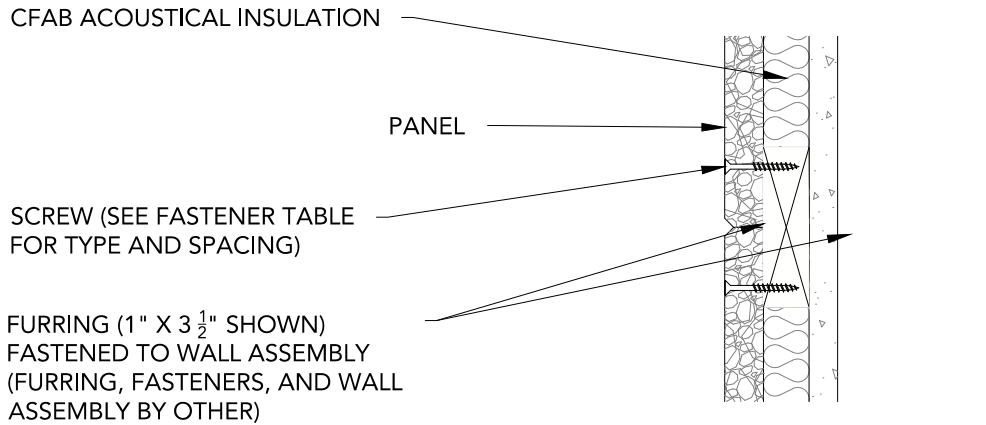
1/4" = 1'-0"

Revised: 2025-04-30

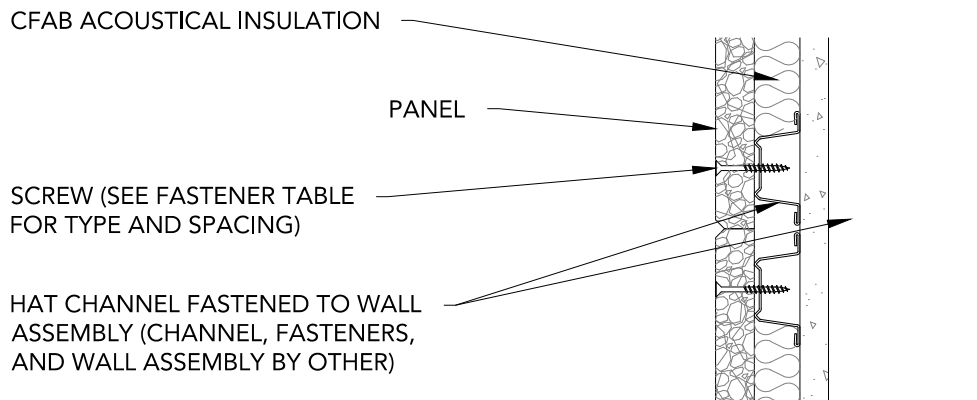
AlphaSorb® Wood Fiber Acoustic Panels



MOUNTING OPTION 1



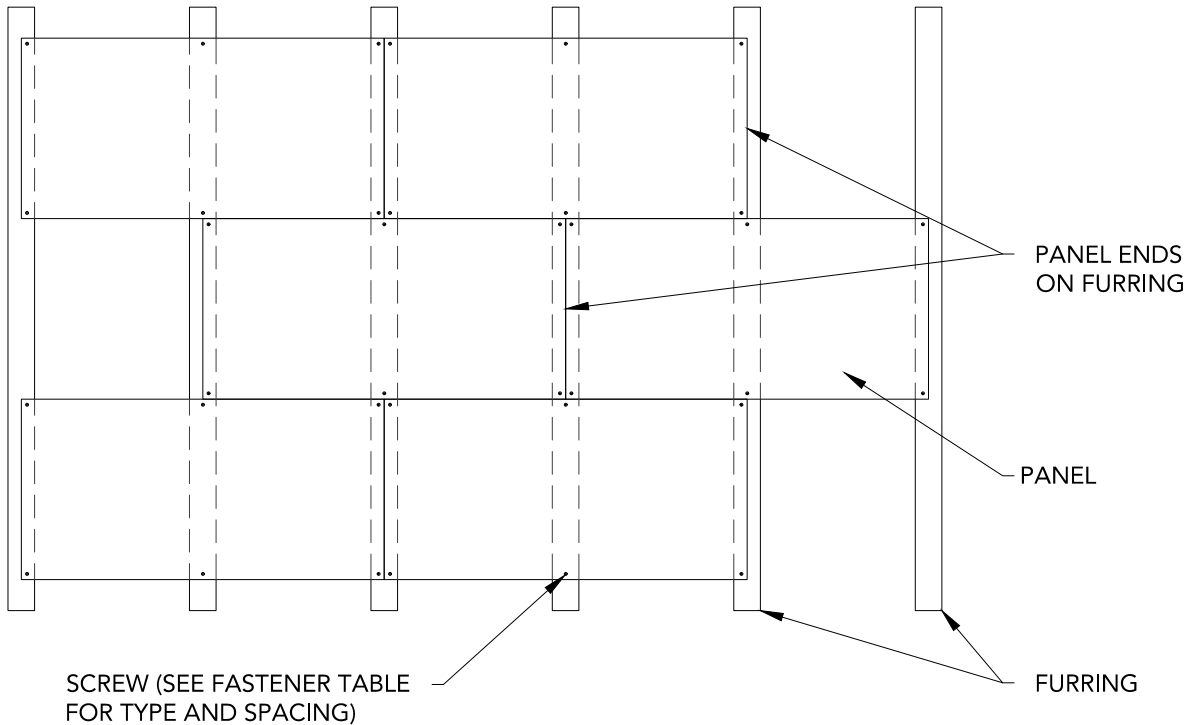
MOUNTING OPTION 2



MOUNTING OPTION 3

Revised: 2025-04-30

AlphaSorb® Wood Fiber Acoustic Panels



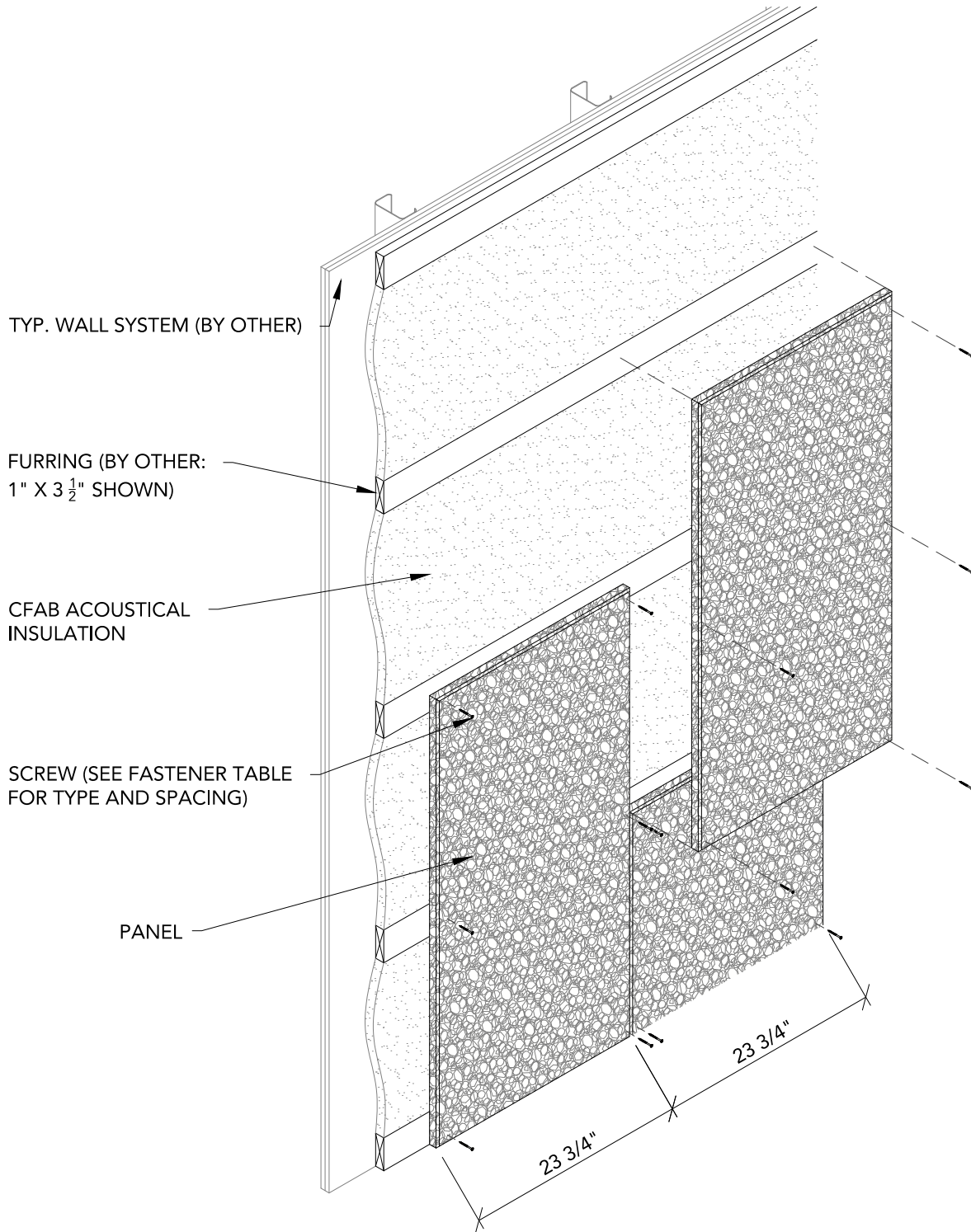
1 TYPICAL FURRING LAYOUT
1/2" = 1'-0"

- FURRING TO BE PERPENDICULAR TO LENGTH OF PANEL
- ENDS TO BE STAGGERED AND FALL ON FURRING
- PANELS TO BE SCREWED TO FURRING (SEE FASTENER TABLE FOR TYPE AND SPACING)
- CONFIGURATION APPLIES TO ALL SIZES (2X4 PANEL SHOWN)

NOMINAL	PANEL SIZE		
	2X2	2X4	2X8
ACTUAL SIZE	23.75" X 23.75"	23.75" X 47.75"	23.75" X 95.5"
RECOMMENDED FURRING SPACING	23.75" O.C.	23.875" O.C.	23.875" O.C.

Revised: 2025-04-30

AlphaSorb® Wood Fiber Acoustic Panels



1 WALL SYSTEM ISOMETRIC
3/4" = 1'-0"

Revised: 2025-04-30

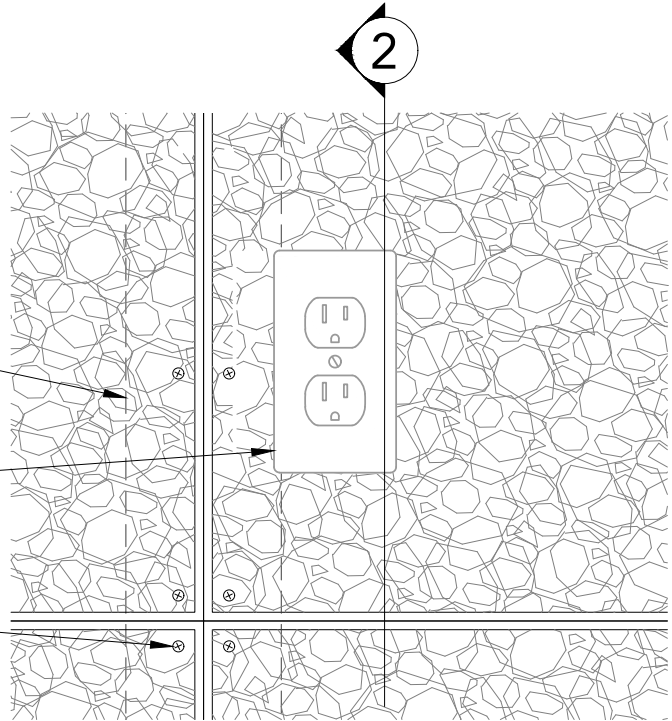
AlphaSorb® Wood Fiber Acoustic Panels

NOTE: DETAILS APPLY FOR ALL MOUNTING OPTIONS (MOUNTING OPTION 2 SHOWN)

FURRING (BY OTHER: 1" X 3 1/2" SHOWN)

OUTLET PENETRATION FIELD CUT

FASTENER INTO FURRING (SEE FASTENER TABLE FOR TYPE AND SPACING)



1 TYPICAL OUTLET ELEVATION

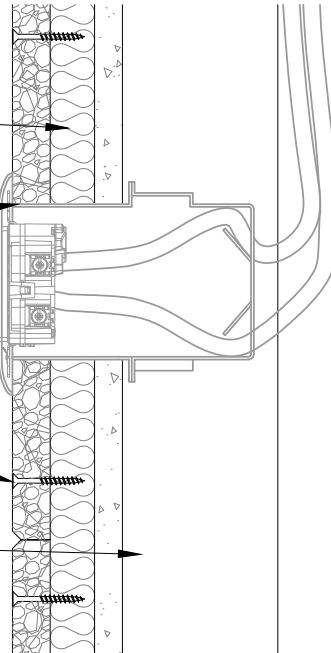
3" = 1'-0"

CFAB ACOUSTICAL INSULATION

OUTLET PENETRATION FIELD CUT

FASTENER INTO FURRING (SEE FASTENER TABLE FOR TYPE AND SPACING)

TYP. WALL ASSEMBLY (BY OTHER)

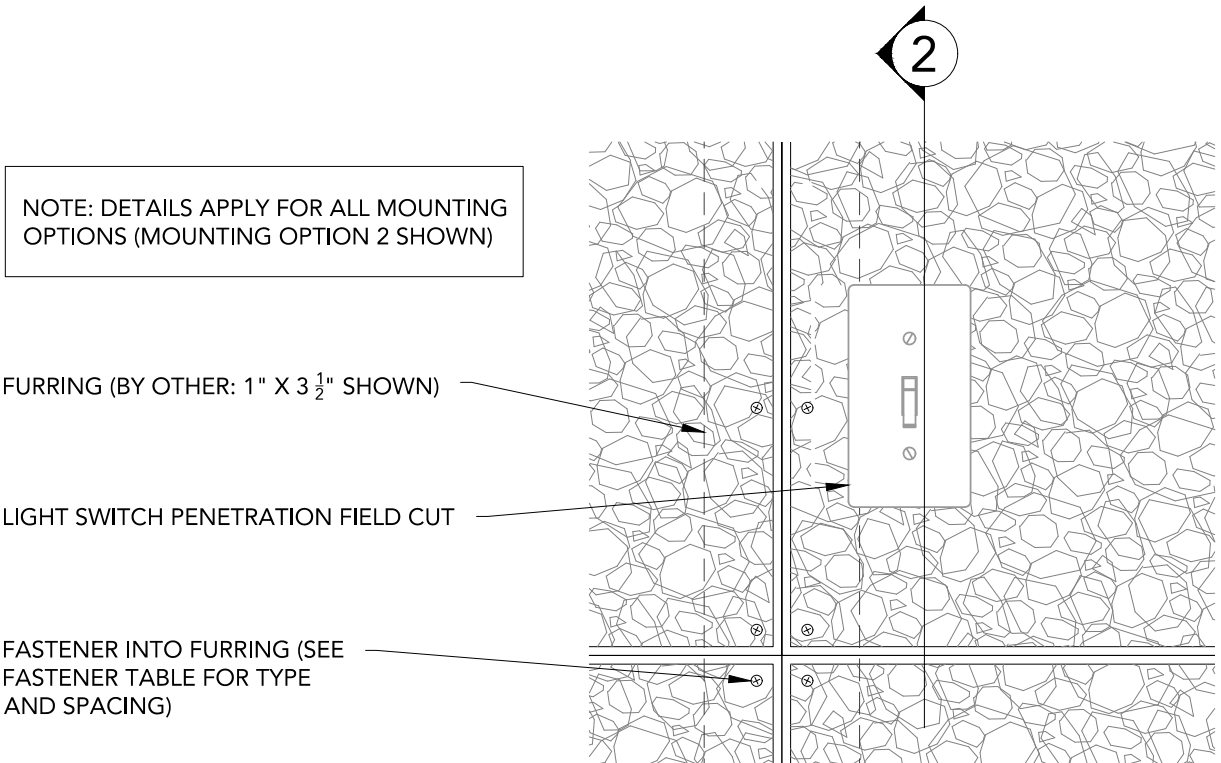


2 TYPICAL OUTLET SECTION

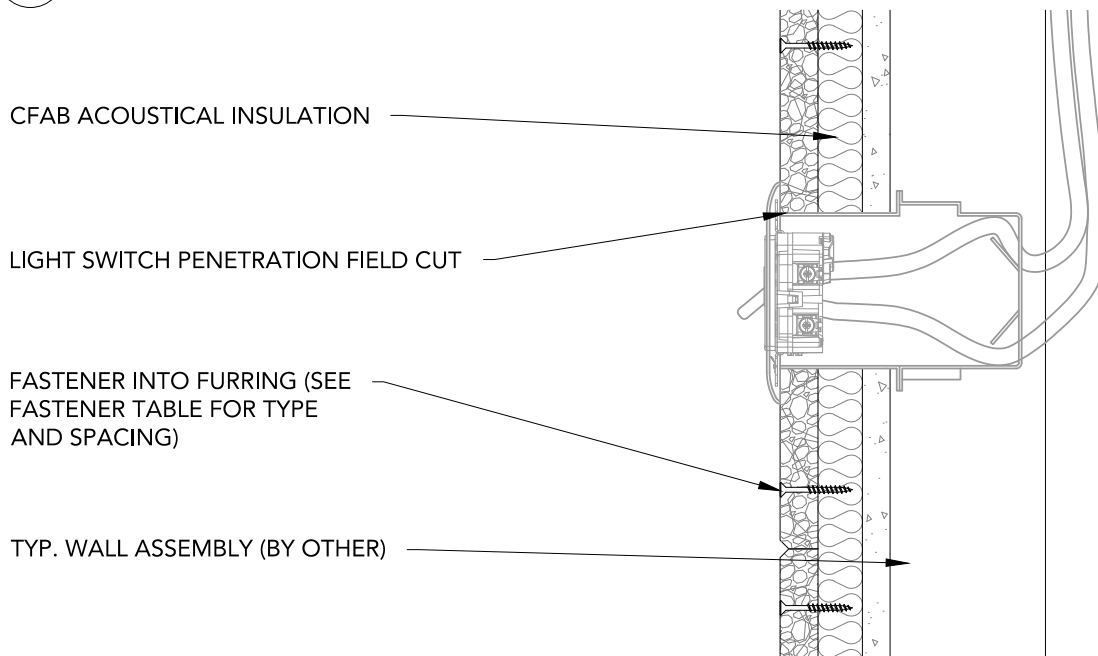
3" = 1'-0"

Revised: 2025-04-30

AlphaSorb® Wood Fiber Acoustic Panels



1 TYPICAL LIGHT SWITCH ELEVATION
3" = 1'-0"



2 TYPICAL LIGHT SWITCH SECTION
3" = 1'-0"

Revised: 2025-04-30