

Iso-Step® Soundproofing Underlayment



Description

Iso-Step® Soundproofing Underlayment is engineered to provide superior impact sound insulation and better performance over other sound control materials. It may be installed over a wood or concrete subfloor and under a wide range of flooring finishes. Installing Iso-Step® underneath the entire flooring assembly short circuits impact noise to combat footfall and structure-borne sound and vibration.

Manufactured in the USA using recycled material, this rubber floor underlayment has been rigorously field tested with proven results. It can be installed under most types of grouted, glued, and floating floors, including ceramic tile, stone, marble, brick, pavers, hardwood, engineered wood, laminate, parquet, luxury vinyl tile, and carpet.

Technical Characteristics

Item	Standard	2mm	5mm	10mm 12mm
Tensile Strength	ASTM D412	90 PSI	90 PSI	102 +/- 5 PSI
Density	ASTM D3576 Section 12	65 lbs. / ft ³		
Coefficient to Friction	ASTM D1894	0.85 wet		
Compression Set	ASTM D395	10.2% of original deflection		
Compression Resistance	ASTM D3575 ASTM D3676	66 cubic feet		
Water Vapor Transmission Rate	ASTM E96	4.8 g/m ² /24hr		
Flammability	FF 1-70 CPSC	Passed		
Durometer	ASTM D2240	Durometer 40 +/- 5	Durometer 45 +/- 5	
Volatile Organic Compounds	CDPH v1.2	<0.5mg/m ³		
Delta Insulation Class (DIC)	ASTM E2179	22	24	25
Impact Insulation Class (IIC)	ASTM E90 ASTM E492	51	54	55
Sound Transmission Class (STC)	ASTM E90-09 ASTM E492	50	50	52

Tested with LVT over 6" concrete slab without drop ceiling.

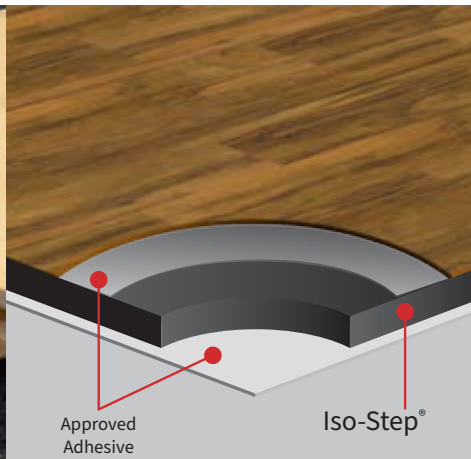
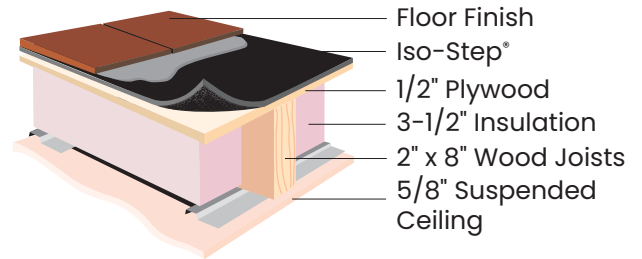
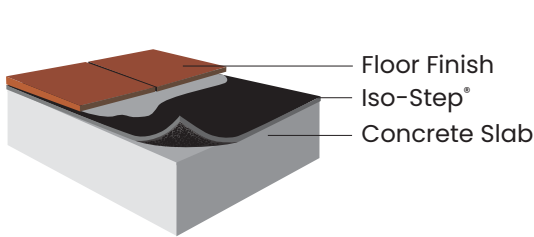
Revised: 2025-04-30

Iso-Step® Soundproofing Underlayment

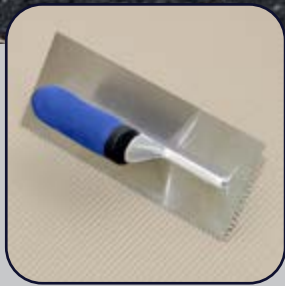
Technical Data Chart

Thickness	Roll Size	Roll Weight	Weight (lbs/sq ft)	Delta IIC*
2 mm	4' x 75'	114 lbs	0.38	22
5 mm	4' x 30'	100 lbs	0.84	24
6 mm	4' x 30'	110 lbs	0.92	25
10 mm	4' x 15'	99 lbs	1.65	25
12 mm	4' x 15'	120 lbs	2.00	25

*DELTA IIC (ΔIIC): Quantifies the performance gain between the first and second test once an underlayment is added to the assembly.



**» EASY
INSTALLATION**



Revised: 2025-04-30