

Mason Industries Isolation Mount



Description

The Mason Industries Isolation Mount supports lightweight machinery to reduce structurally transmitted noise and vibration. The double deflection neoprene mount is installed underneath the legs or mounting points between the machinery and the floor. They can be used for a variety of applications including isolating fans, motors, pumps, punch presses, compressors, air handling equipment and other vibrating machinery.

Mason Industries Isolation Mounts are neoprene coated steel for optimal performance and durability. Neoprene prevents the corrosion of the steel parts and provide a non-skid surface. These mounts are available in three sizes with various weight ratings. These mounts ship with included screw cap bolt and washer. The base includes two bolt holes for mounting to the floor or base surface.

The load of the mount should be chosen based on the amount of weight each mounting point will need to support. To determine the weight distribution for a balanced load, take the total weight of the machine and divide by the number of mounting points. The result is the amount of weight capacity for each mount. In cases where there is an unbalanced load, the weight load for each mounting point will need to be determined.

It is not necessary to bolt these mountings to the floor on most installations. They can be used under flat bases that have no bolt holes in much the same manner as rubber pads. When the equipment has a flush drain pan or tank on the bottom, the mounting may be inverted so that the rectangular rubber covered steel base plate provides support over a large area.

Neoprene mountings shall have a minimum static deflection of 0.35" (9mm). All metal surfaces shall be Neoprene covered to prevent corrosion and have friction pads, both top and bottom. Bolt holes shall be provided on the bottom and a tapped hole with capscrew and washer on top. Mountings shall be Type ND, as supplied by Acoustical Solutions..

Technical Characteristics

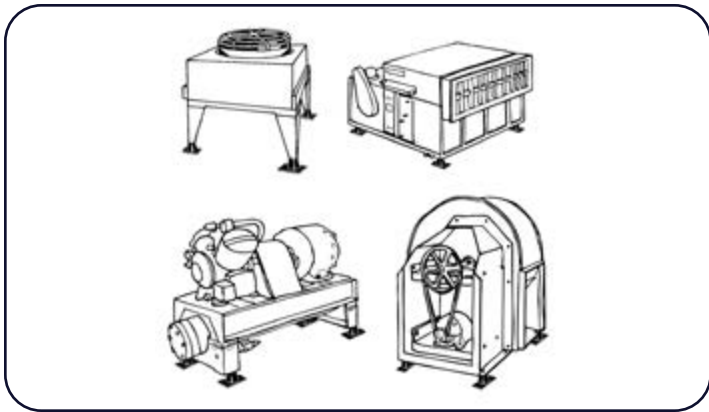
Size (Type A): 3³/₁₆" (l) x 1⁵/₈" (w) x 1¹/₂" (h)

Size (Type B): 3⁷/₈" (l) x 2⁵/₁₆" (w) x 1⁷/₈" (h)

Size (Type C): 5¹/₂" (l) x 3⁵/₁₆" (w) x 2³/₄" (h)

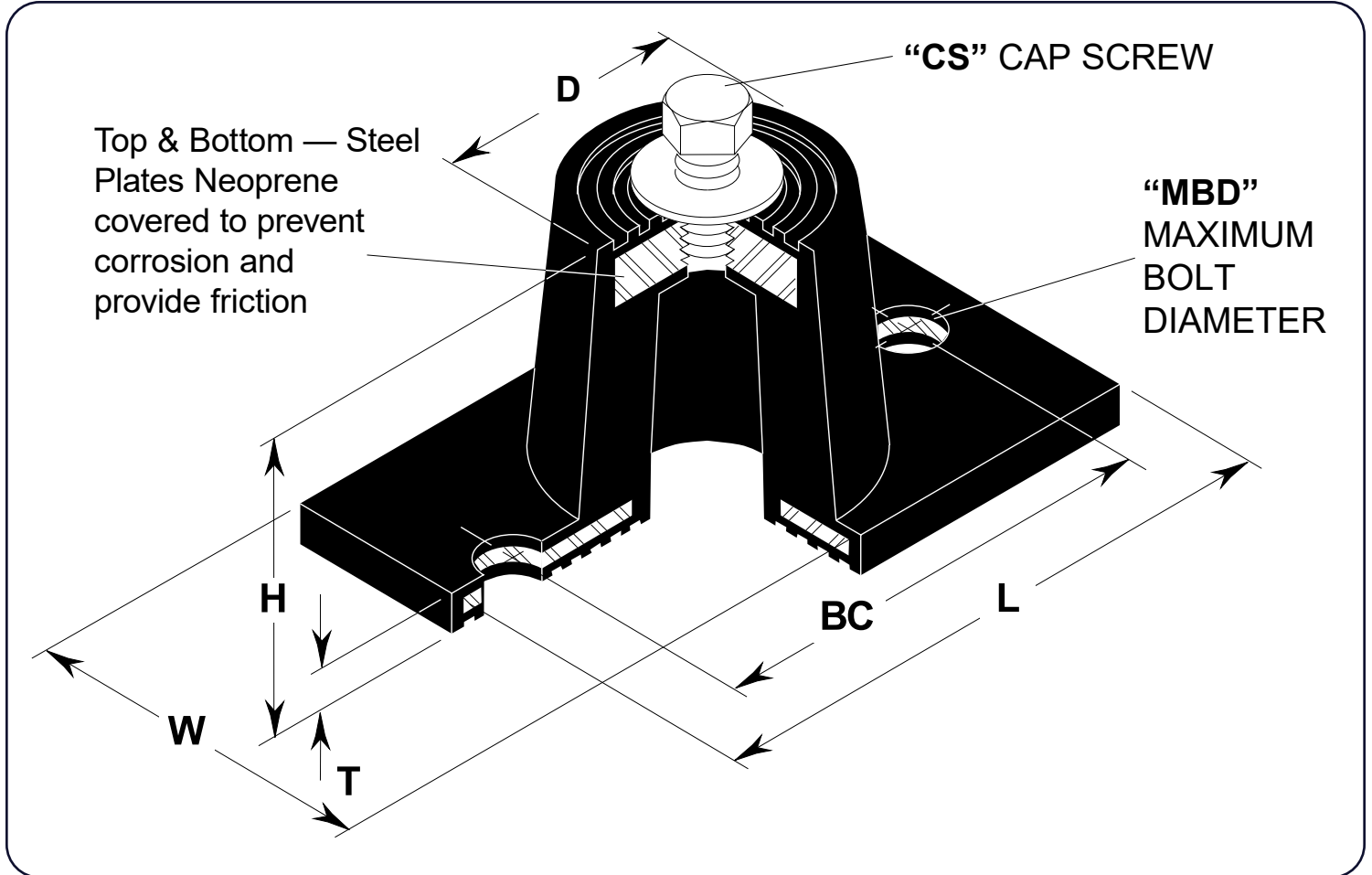
Durometer Range: 30–70

Weight Capacity Range: 15–1,000 lbs. ea.



Revised: 2025-04-30

Mason Industries Isolation Mount



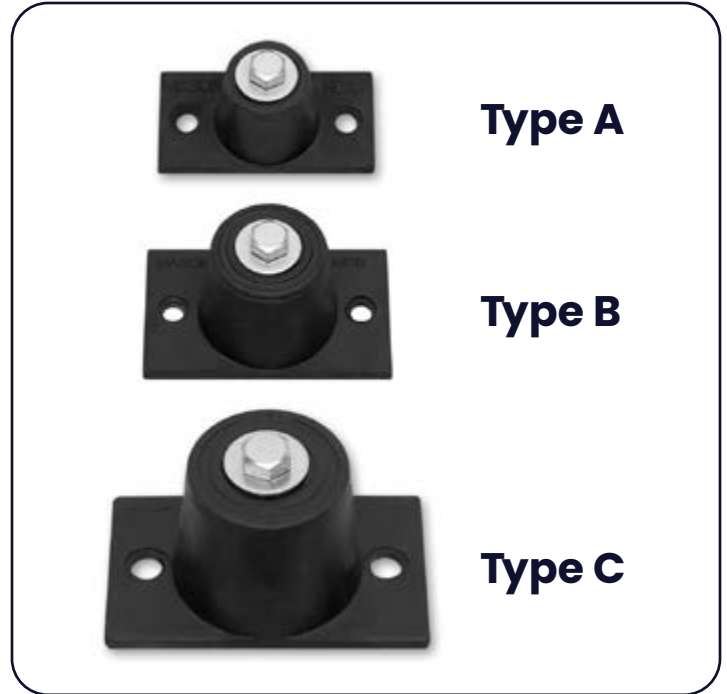
Sizing Chart									
Type	Length (L)	Width (W)	Height (H)	Diameter (D)	Thickness (T)	Bolt Centers (BC)	Max. Bolt Diameter (MBD)	Cap Screw (CS)	Threads / Inch (CS)
A	3 ³ / ₁₆ "	1 ⁵ / ₈ "	1 ¹ / ₂ "	1 ³ / ₁₆ "	3 ¹ / ₁₆ "	2 ³ / ₈ "	5 ¹ / ₁₆ "	5 ¹ / ₁₆ " (d) x 3 ³ / ₄ " (l)	18
B	3 ⁷ / ₈ "	2 ⁵ / ₁₆ "	1 ⁷ / ₈ "	1 ³ / ₄ "	1 ¹ / ₄ "	3"	5 ¹ / ₁₆ "	3 ⁷ / ₈ " (d) x 1" (l)	16
C	5 ¹ / ₂ "	3 ⁵ / ₁₆ "	2 ³ / ₄ "	2 ⁹ / ₁₆ "	1 ¹ / ₄ "	4 ¹ / ₈ "	1 ¹ / ₂ "	1 ¹ / ₂ " (d) x 1" (l)	13

Revised: 2025-04-30

Mason Industries Isolation Mount

Features

- Offers more than three times the deflection of pads
- Prevent noise and high frequency vibration
- Isolate a wide range of equipment
- Neoprene covering prevents corrosion of steel parts
- Supplied with cap screw and washer



Weight Ratings

Type	Maximum Rated Deflection	Mason Part #	Durometer	Rated Weight Capacity
A	0.35"	ND-A-Black	30	15–45 lbs.
		ND-A-Green	40	30–75 lbs.
		ND-A-Red	50	60–125 lbs.
B	0.40"	ND-B-Black	30	50–100 lbs.
		ND-B-Green	40	75–150 lbs.
		ND-B-Red	50	110–235 lbs.
		ND-B-White	60	180–380 lbs.
C	0.50"	ND-B-Yellow	70	300–600 lbs.
		ND-C-Green	40	140–260 lbs.
		ND-C-Red	50	200–400 lbs.
		ND-C-White	60	310–600 lbs.
		ND-C-Yellow	70	520–1000 lbs.

Revised: 2025-04-30