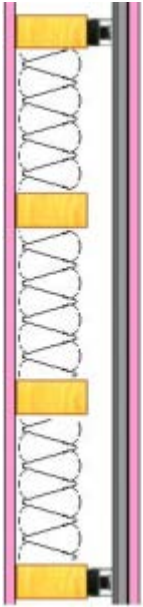


Resilient Sound Isolation Clip (RSIC-1)

Wood Assemblies (Typical)



Direct to Wood Stud

- 5/8" GYPSUM
- 7/8" x 25 gauge furring Channel @ 24" O.C.
- RSIC-1 clip at 48" O.C.
- 2' x 4' wood studs @ 16" O.C.
- 3 1/2" unfaced fiberglass insulation
- 5/8" GYPSUM

STC = 55



Direct to Wood Stud

- 5/8" GYPSUM
- 7/8" x 25 gauge furring Channel @ 24" O.C.
- RSIC-1 clip @ max 24" x 48" O.C.
- 2' x 4' wood studs @ 16" O.C.
- 6" fiberglass batt insulation
- 5/8" GYPSUM

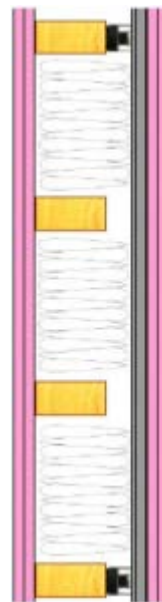
STC = 58



Direct to Wood Stud

- 5/8" GYPSUM
- 7/8" x 25 gauge furring Channel @ 24" O.C.
- RSIC-1 clip at 48" O.C.
- 2' x 4' wood studs @ 16" O.C.
- 6" unfaced fiberglass insulation
- 5/8" GYPSUM

STC = 56



Direct to Wood Stud

- (2) layers 5/8" GYPSUM
- 7/8" x 25 gauge furring Channel @ 24" O.C.
- RSIC-1 clip at 48" O.C.
- 2' x 4' wood studs @ 16" O.C.
- 6" unfaced fiberglass insulation
- (2) layers 5/8" GYPSUM

STC = 62

Revised: 2025-04-30

Resilient Sound Isolation Clip (RSIC-1)

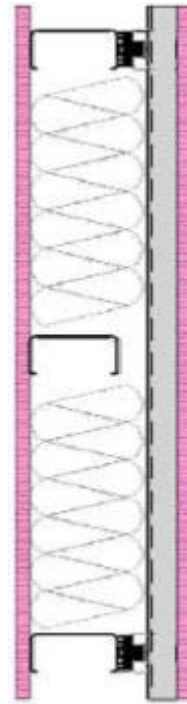
Steel Assemblies (Typical)



Direct to Steel Stud

- 5/8" GYPSUM
- 7/8" x 25 gauge furring Channel
- RSIC-1 clip at 48" O.C.
- 2 1/2" steel studs @ 16" O.C.
- 3 1/2" fiberglass insulation
- 5/8" GYPSUM

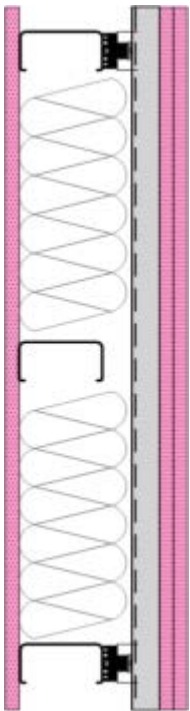
STC = 56



Direct to Steel Stud

- 5/8" GYPSUM
- 7/8" x 25 gauge furring Channel
- RSIC-1 clip @ 48" O.C.
- 3 1/2" steel studs @ 24" O.C.
- 5 1/2" fiberglass batt insulation
- 5/8" GYPSUM

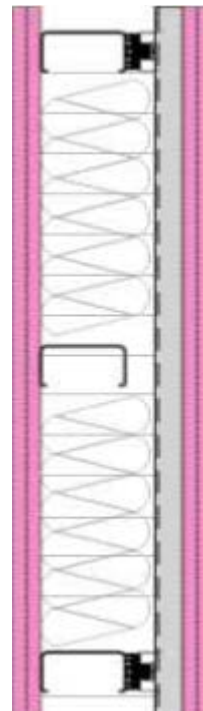
STC = 58



Direct to Steel Stud

- (2) layers 5/8" GYPSUM
- 7/8" x 25 gauge furring Channel
- RSIC-1 clip at 48" O.C.
- 3 1/2" steel studs @ 24" O.C.
- 5 1/2" fiberglass insulation
- 5/8" GYPSUM

STC = 61



Direct to Steel Stud


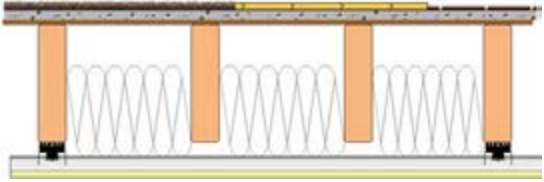
- (2) layers 5/8" GYPSUM
- 7/8" x 25 gauge furring Channel
- RSIC-1 clip at 48" O.C.
- 3 1/2" steel studs @ 24" O.C.
- 5 1/2" unfaced fiberglass insulation
- (2) layers 5/8" GYPSUM


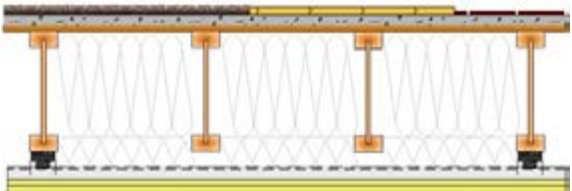
STC = 64

Revised: 2025-04-30

Resilient Sound Isolation Clip (RSIC-1)

RSIC-1 WOOD/FLOOR CEILING ASSEMBLIES 1 & 2 HOUR


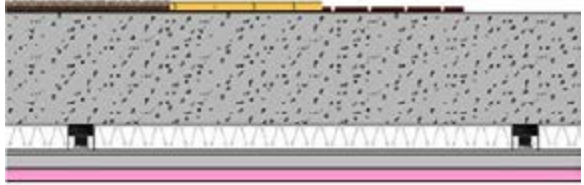
Carpet	STC 61	IIC 74		
Hard Wood	STC 61	IIC 55		
Tile	STC 61	IIC 53		
(Open Web Truss)				

Carpet	STC 61	IIC 74		
*Hard Wood	STC 61	FIIC 60		
Tile	STC 61	FIIC 63		
* No Acoustical Underlayment Installed F = Indicates Field Test				


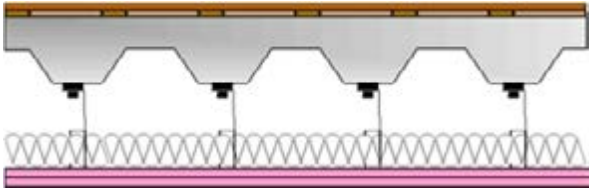
RSIC-1 STEEL CEILING ASSEMBLIES 1 & 2 HOUR

Carpet	STC 60	IIC 70		
Hard Wood	STC 60	IIC 60		
Tile	STC 60	FIIC 59		
F = Indicates Field Test				

RSIC-1 CONCRETE CEILING ASSEMBLIES 1 & 2 HOUR

Carpet	STC 60	FIIC 84		
Hard Wood	STC 60	FIIC 74		
Tile	STC 60	FIIC 70		
Bare	STC 60	FIIC 51		
F = Indicates Field Test				

RSIC-1 STEEL & CONCRETE CEILING ASSEMBLIES 1 & 2 HOUR

Hard Wood	STC 60	FIIC 74		
F = Indicates Field Test				

Revised: 2025-04-30

Resilient Sound Isolation Clip (RSIC-1)

RSIC-1 WOOD/FLOOR CEILING ASSEMBLIES 1 & 2 HOUR		
The Lowest Cost Floor-Ceiling System using RSIC technology.		
<p>Our research team has developed a breakthrough Floor-Ceiling design which eliminates the need for Light Weight Gypsum Concrete and Acoustical Mats, while exceeding code for both Fire and Sound.</p>		
 <p>UL L502, L513, L514, L516, L325, L569, L590, L593</p> <p>RSIC-1 Ceramic Tile system w/o Light Weight Gypsum Concrete</p>	<p>Title: STC 57 IIC 56 RAL IN08-018</p>	
	<p>RSIC-1 Ceramic Tile system with Light Weight Gypsum Concrete</p>	
 <p>UL L502, L513, L514, L516, L325, L569, L590, L593</p> <p>RSIC-1 Vinyl system w/o Light Weight Gypsum Concrete</p>	<p>Title: STC 57 IIC 52 RAL IN08-016</p>	
	<p>RSIC-1 Vinyl system with Light Weight Gypsum Concrete</p>	
 <p>UL L502, L513, L514, L516, L325, L569, L590, L593</p> <p>RSIC-1 Laminate Wood system w/o Light Weight Gypsum Concrete</p>	<p>Title: STC 57 IIC 52 RAL IN08-016</p>	
	<p>RSIC-1 Laminate Wood system with Light Weight Gypsum Concrete</p>	
 <p>UL L502, L513, L514, L516, L325, L569, L590, L593</p> <p>RSIC-1 Carpet system w/o Light Weight Gypsum Concrete</p>	<p>Title: STC 57 IIC 77 RAL IN08-017</p>	
	<p>RSIC-1 Carpet system With Light Weight Gypsum Concrete</p>	

Revised: 2025-04-30