

INSTALLATION GUIDE

Rotofast Polyester Snap On Anchor



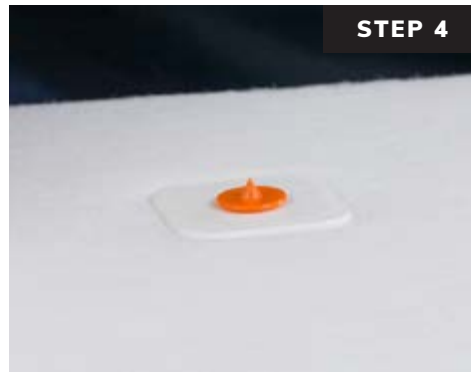
Measure and mark the location where panel will be placed and mark the orientation on the back of the panel.



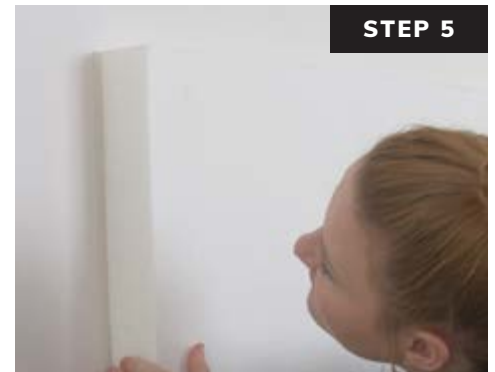
Make a cut about 1-1/2" long by 3/4" deep at each anchor location. It may take a few passes to complete the cut.



Screw Rotofast Snap-On Anchors into back of the panel using the Rotofast driver tool. Do not over-tighten.



Insert reusable marking plugs into the Snap-On anchors.



Push panel against wall to mark anchor locations.



Screw ratchets to wall at marked locations. Flat end of ratchet goes against the wall, curved end faces out.

#8 screws recommended

*Hollow wall anchors are recommended for drywall applications.



Firmly strike panel onto ratchets to complete the installation.

Ask your panel manufacturer or Rotofast representative for recommended anchor locations and quantities per panel.

Revised: 2025-04-30